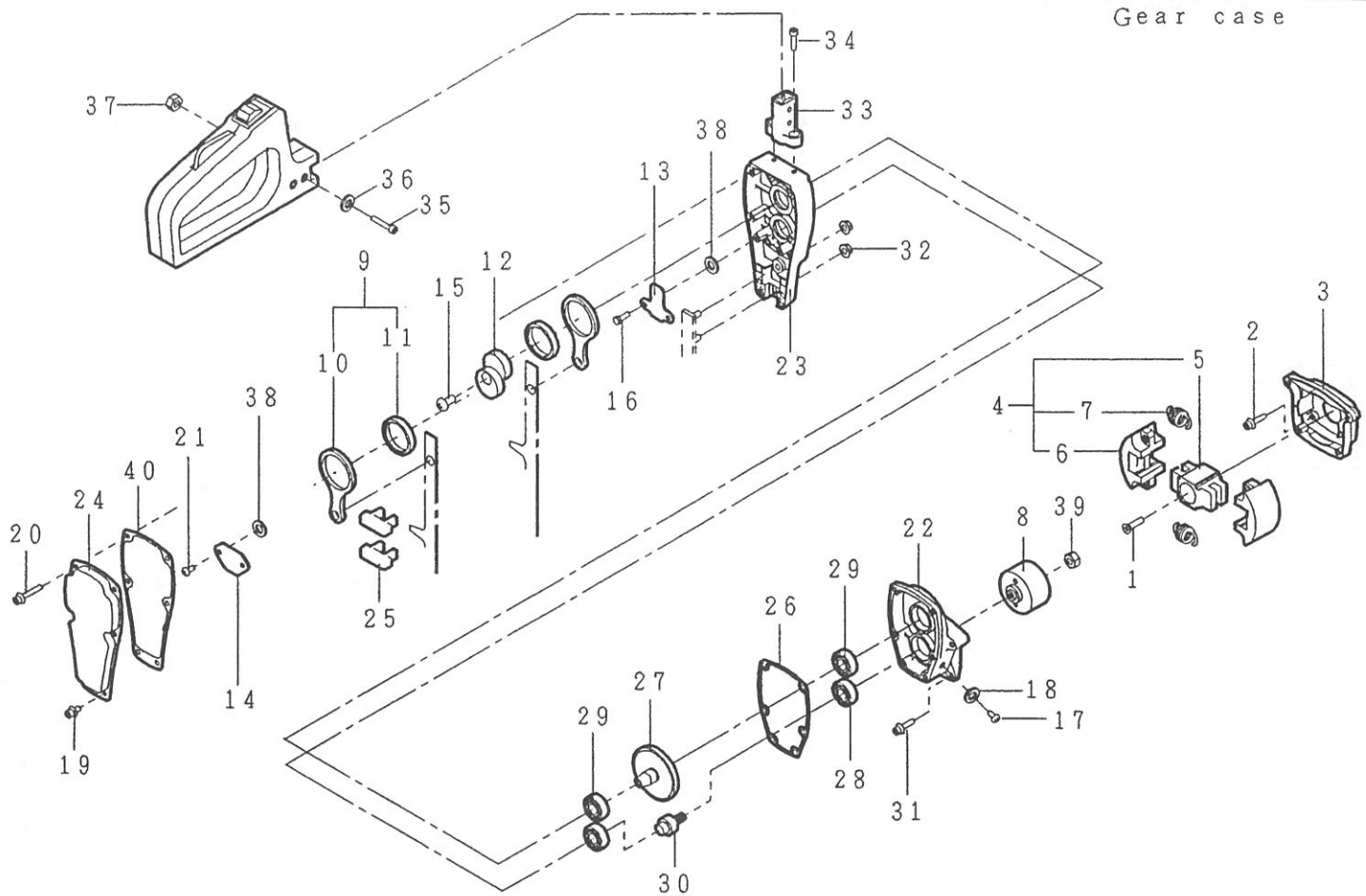


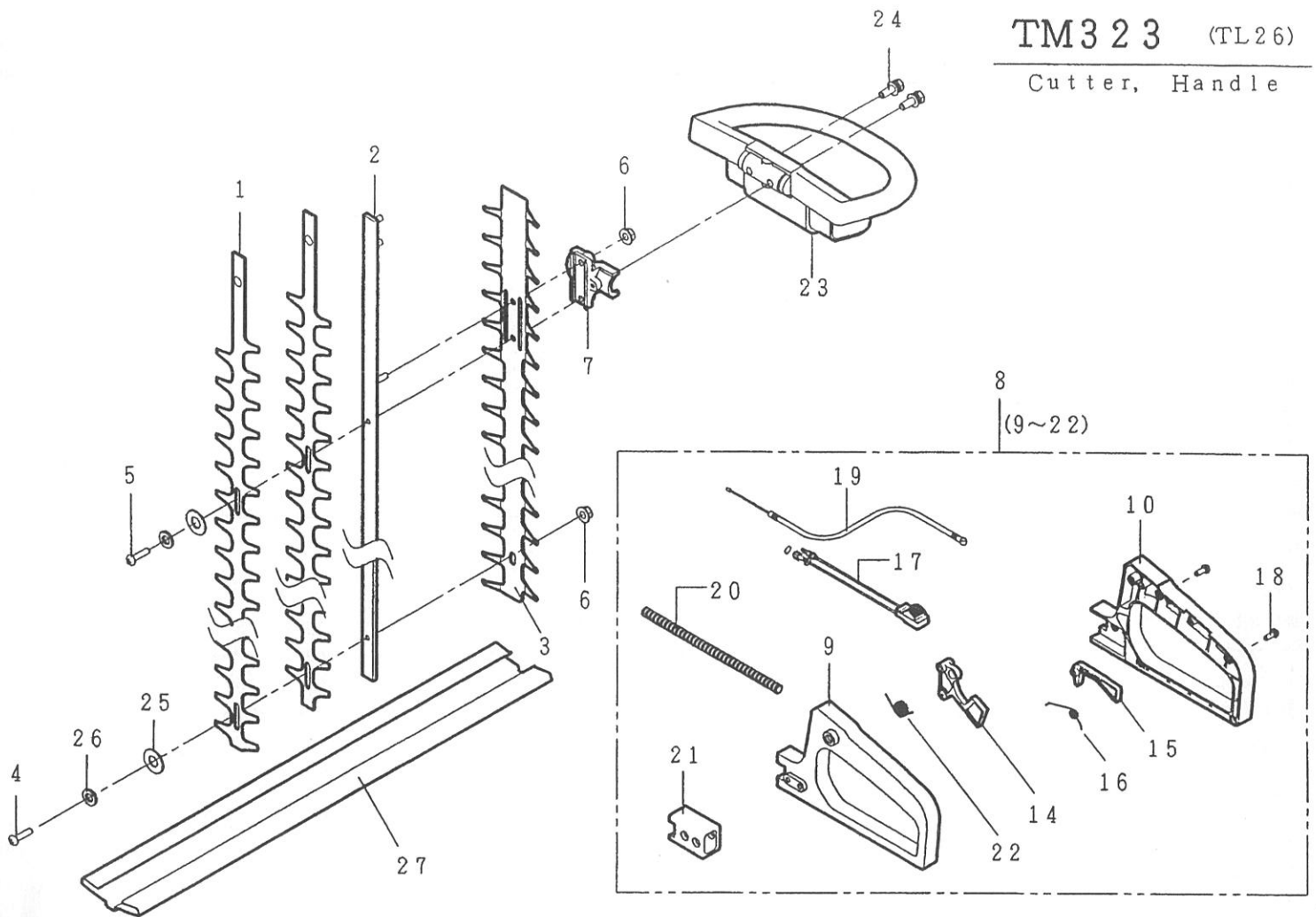
46013-717

| REF. NO. | PARTS NO. | PARTS NAME | Q' TY INCLUDING | Jul. | 1999 | RECOMM. (%) | REMARKS |
|----------|-----------|-----------------------------|-----------------|------|------|-------------|---------|
| | | | | | | | |
| 1 | 461L 0620 | (+)FLAT SCREW | 1 | | | 3 | |
| 2 | 423U 0516 | SOCKET SCREW FLANGE M5x16 | 4 | | | 3 | |
| 3 | 51070 125 | ENGINE BASE | 1 | | | 3 | |
| 4 | 71019 114 | CLUTCH SHOE ASS' Y | 1 | | | - | |
| 5 | 11055 105 | CLUTCH HUB | 1 | | | 6 | |
| 6 | 68025 111 | CLUTCH SHOE | 2 | | | 15 | |
| 7 | 68014 112 | CLUTCH SHOE SPRING | 2 | | | 6 | |
| 8 | 11014 189 | CLUTCH DRUM C. P. | 1 | | | 5 | |
| 9 | 11046 101 | CAM ROD C. P. | 2 | | | 5 | |
| 10 | 11048 101 | CAM ROD | 1 | | | - | |
| 11 | 76004 101 | CAM ROLLER | 1 | | | - | |
| 12 | 11047 102 | CAM | 1 | | | 5 | |
| 13 | 11049 101 | SLIDE PLATE | 1 | | | 1 | |
| 14 | 11050 101 | FIXING PLATE | 1 | | | 1 | |
| 15 | 31028 102 | CAM PUSH SCREW | 1 | | | 5 | |
| 16 | 318L 0530 | (+)HEXAGON BOLT(W/SW) M5x30 | 2 | | | 3 | |
| 17 | 371L 0610 | (+)SCREW M6x10 | 1 | | | 3 | |
| 18 | 611L 0600 | PLAIN WASHER M6 | 1 | | | 10 | |
| 19 | 423U 0510 | SOCKET SCREW FLANGE M5x10 | 2 | | | 3 | |
| 20 | 423U 0540 | SOCKET SCREW FLANGE M5x40 | 4 | | | 3 | |
| 21 | 461L 0510 | (+)FLAT SCREW M5x10 | 2 | | | 3 | |
| 22 | 51001 234 | GEAR CASE | 1 | | | 1 | |
| 23 | 51068 105 | CAM CASE | 1 | | | 1 | |
| 24 | 51069 103 | CAM CASE COVER | 1 | | | 1 | |
| 25 | 61010 109 | FELT PACKING | 2 | | | 5 | |



46013-717

| REF. NO. | PARTS NO. | PARTS NAME | Q' TY INCLUDING | Jul. | 1999 | REMARKS |
|----------|-----------|---------------------------|-----------------|------|-------------|---------|
| | | | | | RECOMM. (%) | |
| 26 | 61019 130 | PACKING | 1 | | 10 | |
| 27 | 78004 173 | GEAR | 1 | | 5 | |
| 28 | 916B 6001 | BEARING 6001DDC3 | 1 | | 4 | |
| 29 | 917B 6001 | BEARING 6001Z2C3 | 3 | | 4 | |
| 30 | 78003 125 | PINION | 1 | | 5 | |
| 31 | 423U 0520 | SOCKET SCREW FLANGE M5x20 | 4 | | 3 | |
| 32 | 579L 0600 | FLANGE NUT M6 | 2 | | 3 | |
| 33 | 51116 137 | HANDLE BRACKET | 1 | | 8 | |
| 34 | 413U 0520 | SOCKET SCREW(W/SW) M5x20 | 2 | | 3 | |
| 35 | 412U 0540 | SOCKET SCREW M5x40 | 2 | | 3 | |
| 36 | 666U 0500 | CONICAL SPRING WASHER M5 | 2 | | 3 | |
| 37 | 512U 0500 | HEXAGON NUT M5 | 2 | | 3 | |
| 38 | 68036 230 | WASHER | 4 | | 3 | |
| 39 | 31058 154 | NUT | 1 | | 3 | |
| 40 | 61019 213 | PACKING | 1 | | 10 | |
| | | | | | | |
| | | | | | | |
| | | | | | | |
| | | | | | | |
| | | | | | | |
| | | | | | | |
| | | | | | | |
| | | | | | | |



46013-717

| REF. NO. | PARTS NO. | PARTS NAME | Q' TY | | | RECOMM. (%) | REMARKS |
|----------|--------------|---------------------------|-------|-----------|-------|-------------|---------|
| | | | | INCLUDING | | | |
| 1 | 91053 106 | CUTTER(A) | 2 | | | 15 | |
| 2 | 11051 109 | CUTTER GUIDE | 1 | | | 10 | |
| 3 | 51090 114 | PROTECTOR | 1 | | | 3 | |
| 4 | 31029 110 | STEP BOLT(S) | 4 | | | 6 | |
| 5 | 31030 104 | STEP BOLT(L) | 1 | | | 6 | |
| 6 | 584L 0600 | U-HEXAGON NUT | 6 | | M6 | 4 | |
| 7 | 51116 123 09 | HANDLE BRACKET | 1 | | | 3 | |
| 8 | 71014 354 | HANDLE ASS'Y | 1 | | | - | |
| 9 | 51106 126 | HANDLE(R) | 1 | | | 3 | |
| 10 | 51106 110 | HANDLE(R) | 1 | | | 3 | |
| 14 | 91010 129 | THROTTLE LEVER | 1 | | | 5 | |
| 15 | 36081 101 | LOCK LEVER | 1 | | | 5 | |
| 16 | 68013 140 | SPRING | 1 | | | 3 | |
| 17 | 41004 145 | STOP SWITCH | 1 | | | 3 | |
| 18 | 464L 0416 | (+)TAPPING SCREW | 5 | | M4x16 | 3 | |
| 19 | 91001 242 | THROTTLE WIRE | 1 | | | 3 | |
| 20 | 41003 145 | TUBE | 1 | | | 4 | |
| 21 | 36006 116 | ABSORBER | 1 | | | 8 | |
| 22 | 68013 313 | SPRING | 1 | | | 3 | |
| 23 | 51105 119 | HANDLE(L) | 1 | | | 3 | |
| 24 | 334L 0535 | (+)HEXAGON BOLT(W/SW, PW) | 2 | | M5x35 | 3 | |
| 25 | 68002 101 | CUTTER WASHER | 5 | | | 6 | |
| 26 | 670V 0700 | CONICAL SPRING WASHER | 5 | | | 3 | |
| 27 | 36065 322 | COVER | 1 | | | 3 | |